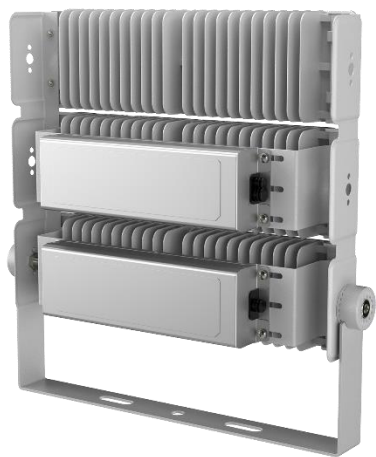


FICHA TECNICA REFLECTOR LED MODULAR 300W



NEO LUZ Outdoor IP66 300W LED Flood Light

Led floodlight

Type LED Flood
light

Model NEO LUZ

Watt 300

Effiency 130-

150lm/w

Specification 402.6*2

87.3*109.3mm

Material Aluminum+pc

Color Gray



Materials:

Structure: Die casting ADC12

Finish: Powder coated

Lens: Polycarbonate

Features:

IP66 waterproof

270degree rotate bracket

50,000 hours lifetime

Application:

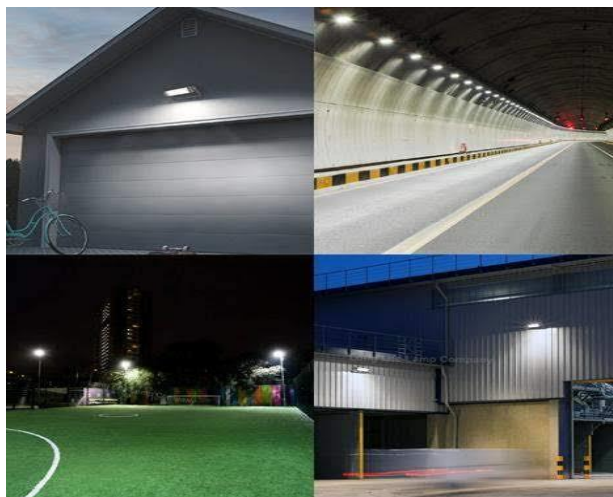
Building Appearance Lighting and Landscape Lighting

Marking and Indicative Lighting

Indoor Space Display Lighting

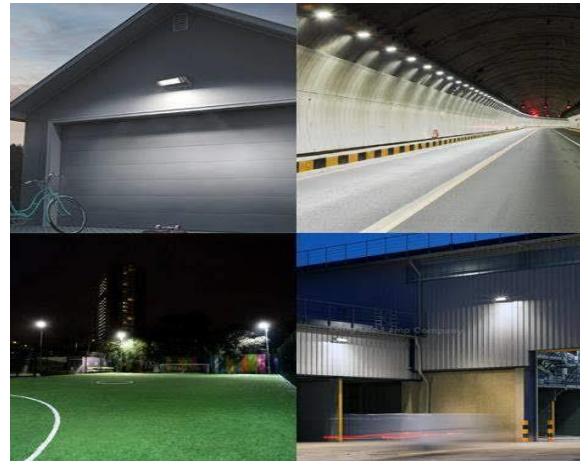
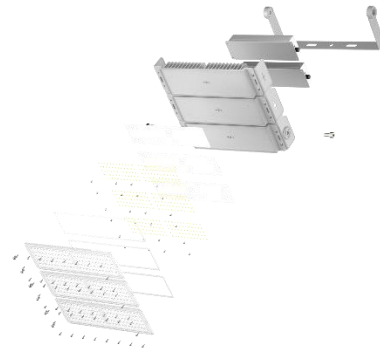
Tunnel and road lighting

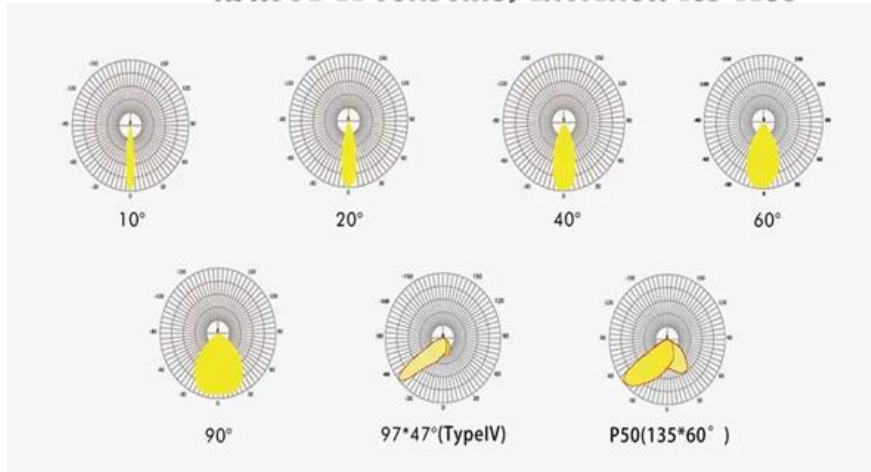
Gymnasium stadium lighting



Specifications

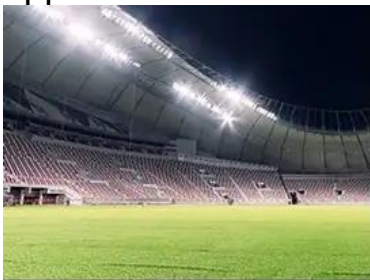
Model	NEO LUZ
Wattage	300W
Light efficacy	130-150lm/w
Lumen	39000-45000lm
Voltage	100-277VAC
LED TYPE	LUMILEDS
DRIVER	
Certificates	ETL cETL CE RoHS
Light color	6500k Cw
IK	IK08
Surge Protection	4KV/10KV
IP grade	IP66
Power Factor	>0.95
Beam angle	15/30/60/90/70*140°
Shell Color	Gray
Size	470*455*170mm
N.W	5.5KG
warranty for normal use 12 hours-14 hours	3 year
24 hour use guarantee	2 year





Product description

New 150Lm/W 300W LED high mast lighting fixtures replace traditional lighting fixtures and can immediately improve the lighting quality in stadiums, large areas, highways, ports and airport, and reduce energy consumption by up to 75% . And it has passed ENEC TUV CE CB SAA RoHS LM79 LM80 TM21 21 IK10 salt spray test approval.



Heat dissipation

Aluminum fin folding design which is very lightweight. Increase the heat dissipation surface area by air cooling to dissipate heat and expand the contact area with air. Accelerates heat diffusion! The thermal effect is good. Compared with traditional die-cast aluminum and profile aluminum, which is heavier and there are certain safety risks. On the contrary, the aluminum fin heat sink is safer.



Dustproof net

Protects the lamp from other debris.

Waterproof IP66

IP66 waterproof, safer for outdoor use.